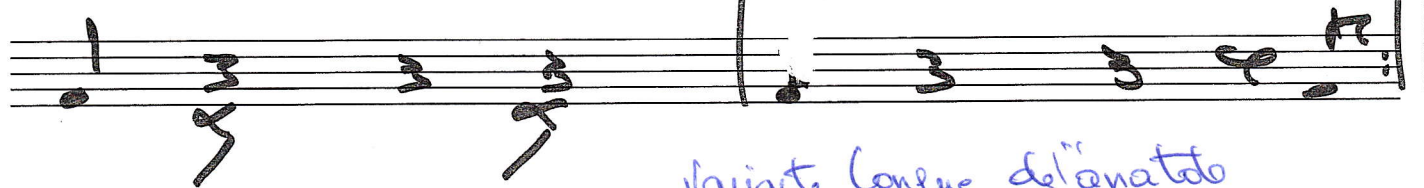
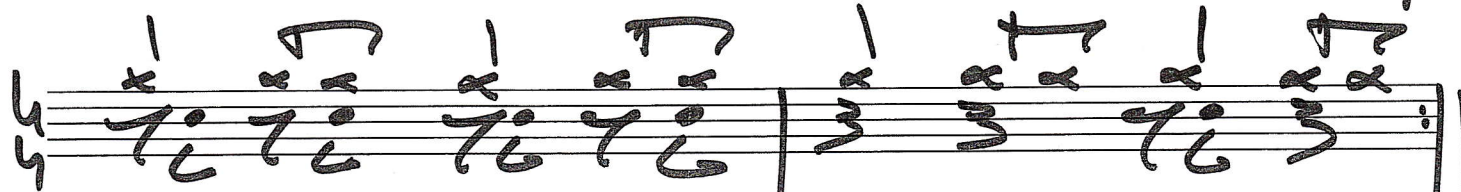
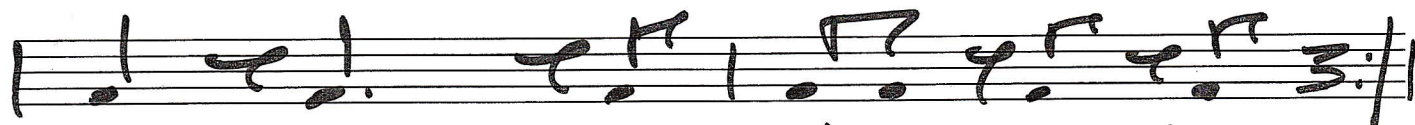
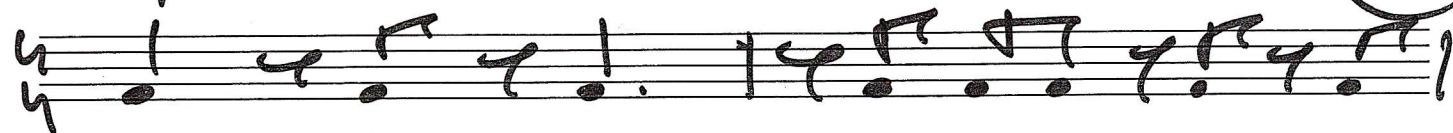


- Rythme (Pedale)

F4e (14)



variate longue de l'anatto

Intonation

①

Annotations: I, C# (I#), D, D# (II#), E (III), A (VI), D (II), G (I), C, C, F, F7, C.

②

Annotations: V, I, bII, I, IV, III, bVI, V, en DO, FA, Sib.

Serpent's Tooth

by MILES DAVIS

Musical staff with notes and accidentals.

Musical staff with notes and accidentals.

Bb

2. BRIDGE

Musical staff with notes and accidentals.

D7 (A-) D7 G7 (D-) G7

Musical staff with notes and accidentals.

Musical staff with notes and accidentals.

Musical staff with notes and accidentals.

SOLOS

C C#7 D- D#7 E- A7 D- G7 C7 E7

Musical staff with notes and accidentals.

1. E- A7 D- G7 2. C C C7 FA

Musical staff with notes and accidentals.

D7 (A-) D7 G7 C C#7 D- D#7 E- A7

Musical staff with notes and accidentals.

D- G7 C7 F C7 A7+9 D7 G7+9

Musical staff with notes and accidentals.

TURN AROUND